



# DAILY AIR MONITORING REPORT

## Florence C&D Landfill – Air Monitoring

Date : 2026-05-08

**Table 1 : Weather Summary**

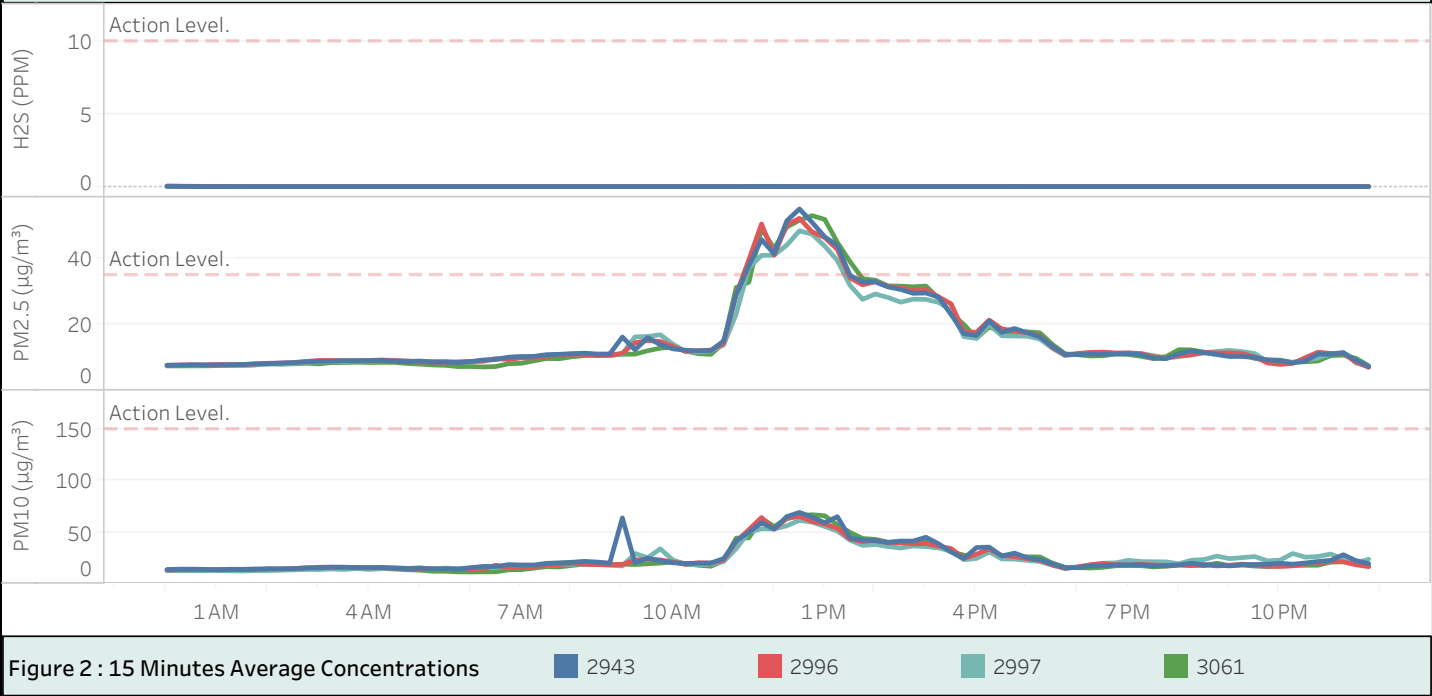
Wind Speed (MPH)	Wind Direction				Temperature (°F)	Relative Humidity (%)	Barometer (inHg)
0.179 to 7.203	2943 SSE	3061 NNW	2996 ESE	2997 NE	Min : 70.34 Max : 100.4	Min : 49.20 Max : 92.70	Min : 29.82 Max : 30.05

**Table 2 : Monitoring Summary**

Site Action Level :	PM10 : 150 µg/m <sup>3</sup>	PM2.5 : 35 µg/m <sup>3</sup>	H2S : 10 PPM			
AQ-SN	Avg. PM10 Daily (µg/m <sup>3</sup> )	Max. PM10-15-min Avg (µg/m <sup>3</sup> )	Avg. PM2.5 Daily (µg/m <sup>3</sup> )	Max. PM2.5-15-min Avg (µg/m <sup>3</sup> )	Avg. H2S Daily (PPM)	Max. H2S-15-min Avg (PPM)
2943	24.9	69.1	15.8	55.2	0.001	0.028
2996	23.5	65.3	15.8	52.3	0.001	0.035
2997	24.0	61.4	15.2	48.6	0.001	0.015
3061	23.2	66.9	15.7	53.2	0.000	0.003



**Figure 1 : Monitoring Locations**





# DAILY AIR MONITORING REPORT

Florence C&D Landfill – Air Monitoring

Date : 2026-05-08

Wind Rose Chart 2943

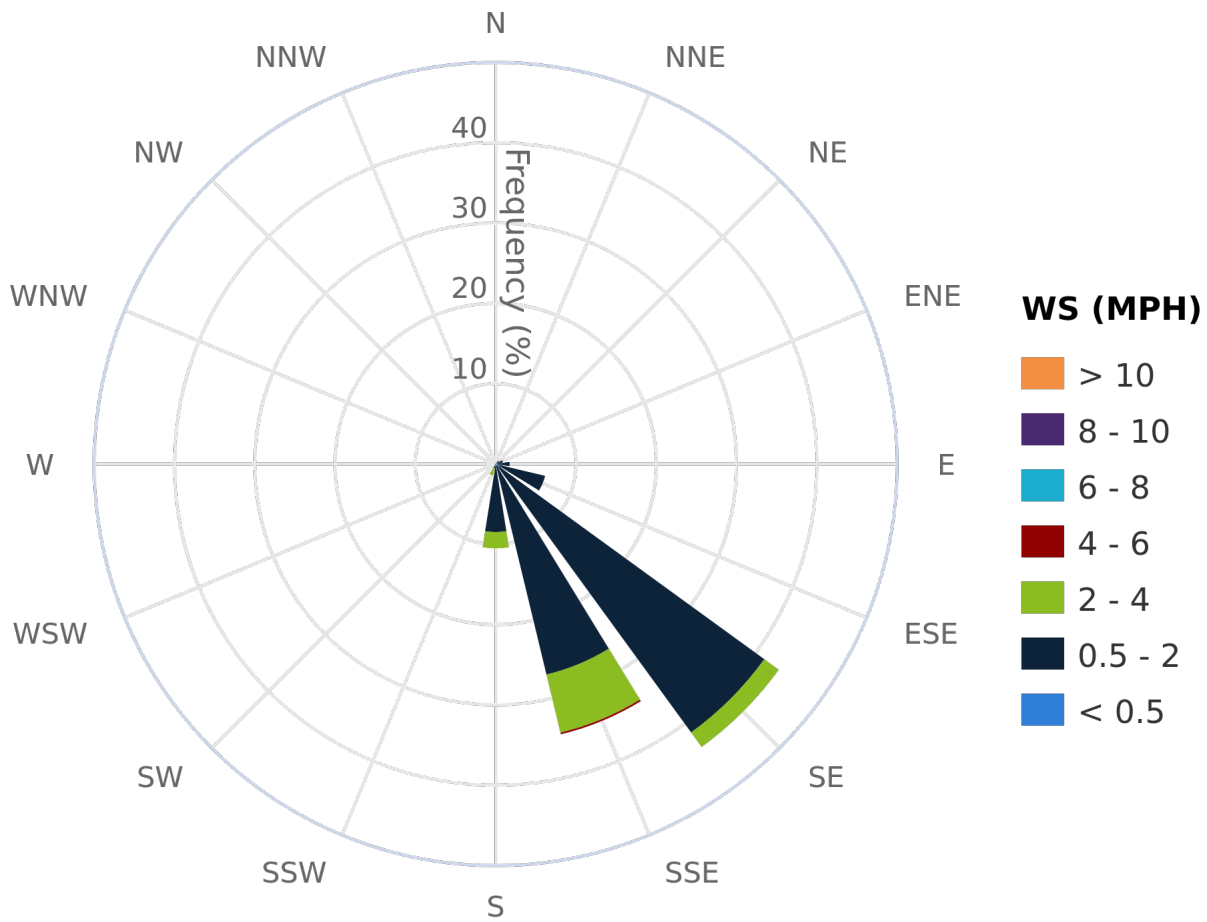


Figure 3 : Wind Rose Chart (WS in MPH)



# DAILY AIR MONITORING REPORT

Florence C&D Landfill – Air Monitoring

Date : 2026-05-08

Wind Rose Chart 3061

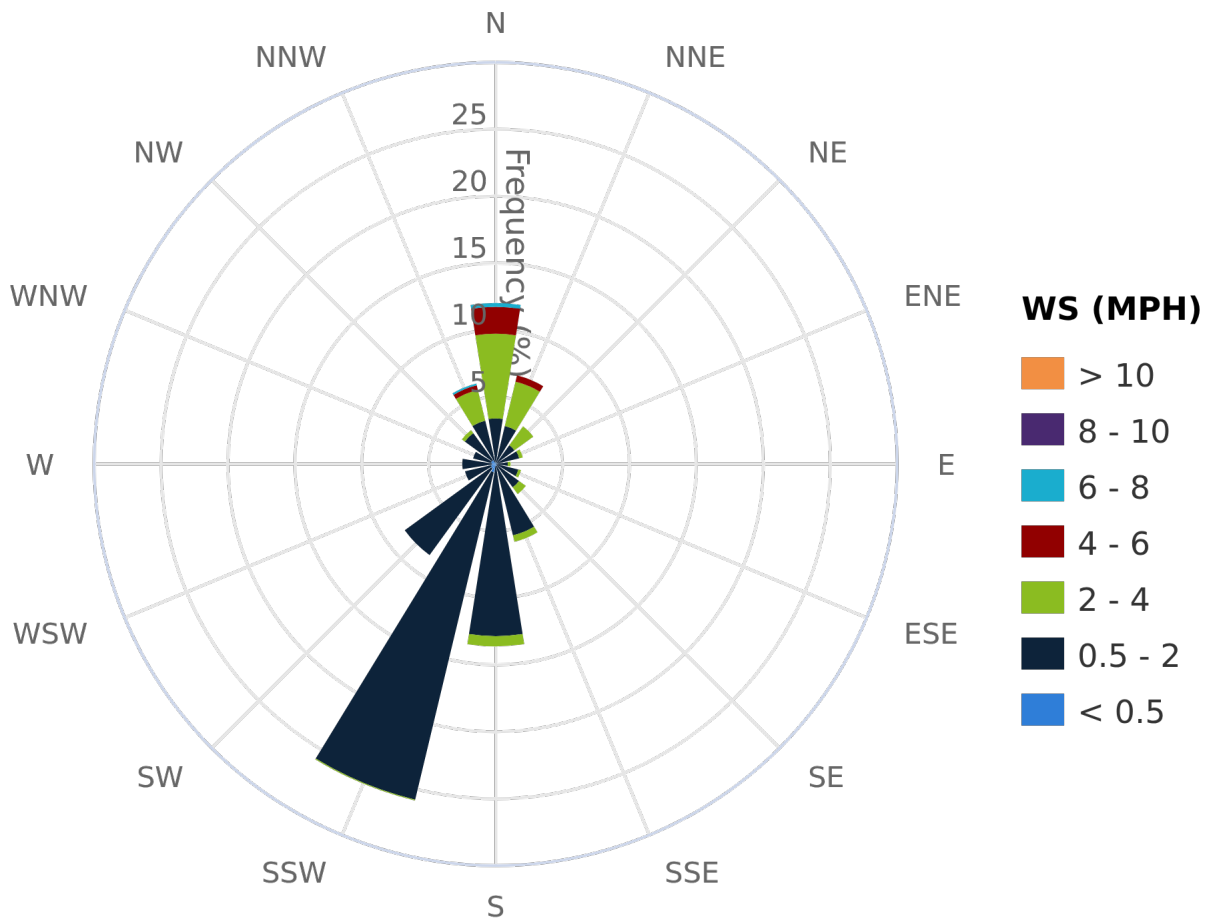


Figure 3 : Wind Rose Chart (WS in MPH)



# DAILY AIR MONITORING REPORT

Florence C&D Landfill – Air Monitoring

Date : 2026-05-08

Wind Rose Chart 2996

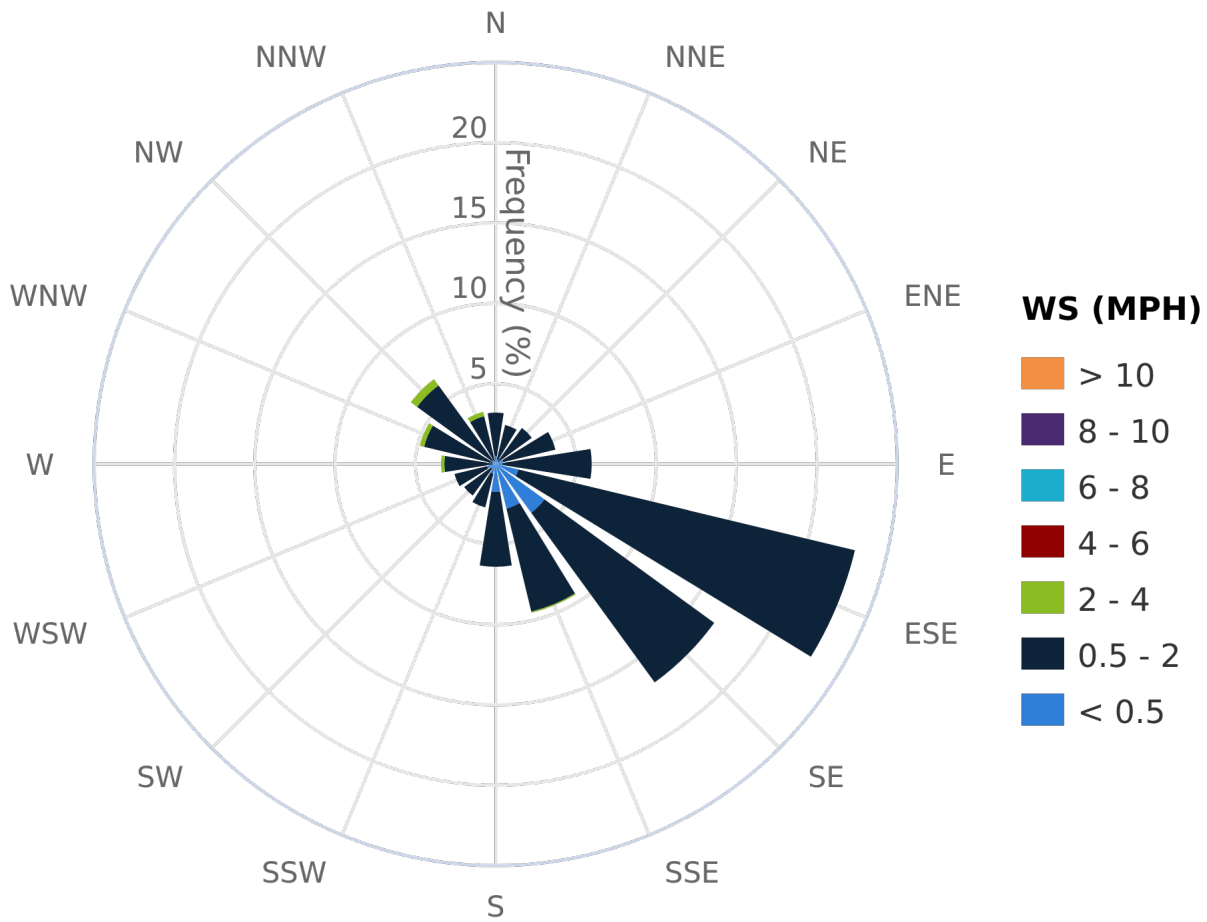


Figure 3 : Wind Rose Chart (WS in MPH)



# DAILY AIR MONITORING REPORT

Florence C&D Landfill – Air Monitoring

Date : 2026-05-08

Wind Rose Chart 2997

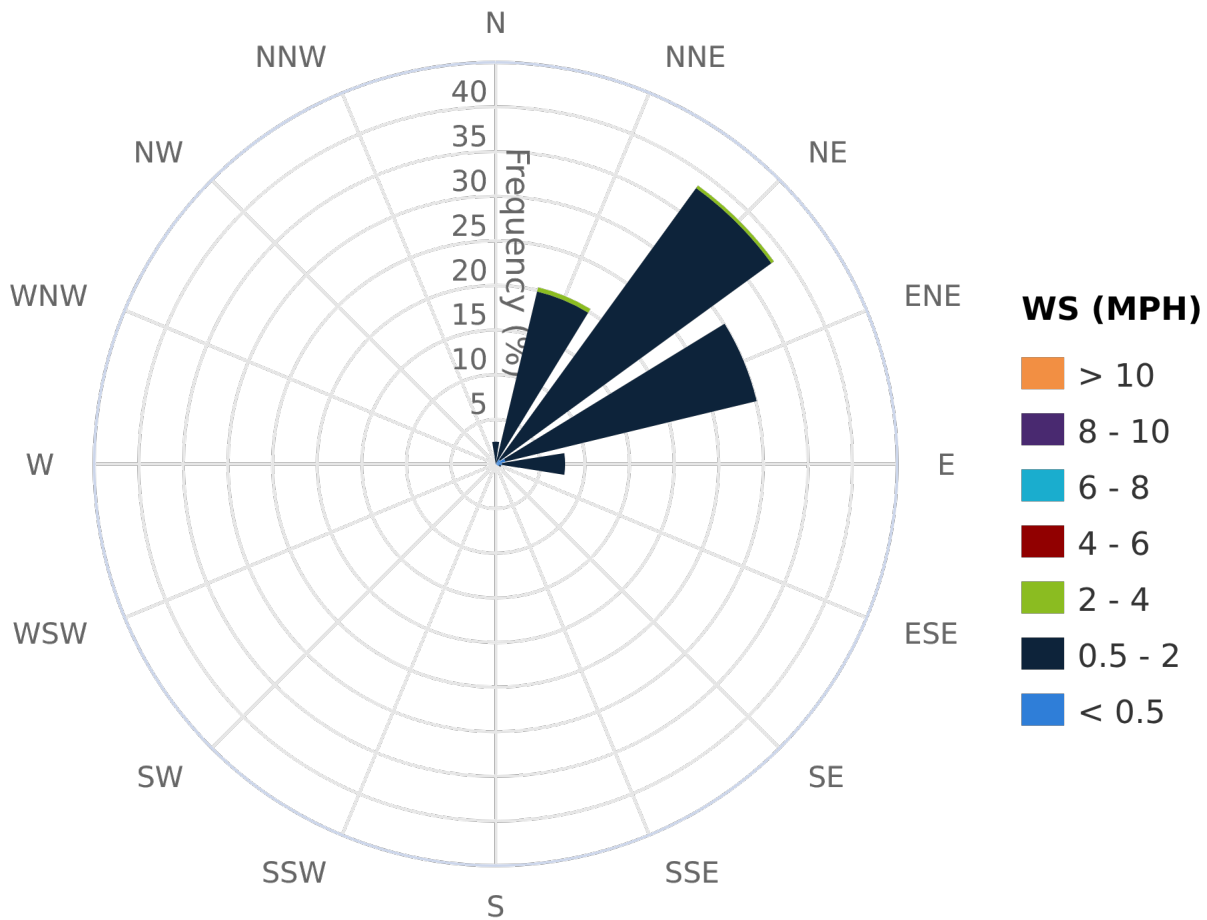


Figure 3 : Wind Rose Chart (WS in MPH)



# DAILY AIR MONITORING REPORT

## Florence C&D Landfill – Air Monitoring

Date : 2026-05-08

**Table 3 : 15 Minute Average Concentrations (AM)**

	Avg. 2943 - PM10 (µg/m³)	Avg. 3061 - PM10 (µg/m³)	Avg. 2997 - PM10 (µg/m³)	Avg. 2996 - PM10 (µg/m³)	Avg. 2943 - PM2.5 (µg/m³)	Avg. 3061 - PM2.5 (µg/m³)	Avg. 2996 - PM2.5 (µg/m³)	Avg. 2997 - PM2.5 (µg/m³)	Avg. 2943 - H2S (PPM)	Avg. 3061 - H2S (PPM)	Avg. 2996 - H2S (PPM)	Avg. 2997 - H2S (PPM)
00:00:00	13.8	12.8	13.0	13.3	7.7	7.5	7.7	7.7	0.028	0.003	0.035	0.000
00:15:00	14.2	12.8	12.6	13.7	7.7	7.5	7.8	7.6	0.018	0.003	0.030	0.000
00:30:00	14.2	12.9	12.8	13.7	7.8	7.5	7.9	7.7	0.007	0.002	0.022	0.000
00:45:00	13.9	12.9	13.0	13.6	7.8	7.5	7.8	7.7	0.001	0.001	0.015	0.000
01:00:00	13.5	13.1	12.7	13.8	7.8	7.6	7.9	7.8	0.000	0.000	0.011	0.000
01:15:00	14.1	13.4	12.6	14.0	7.8	7.7	7.9	7.7	0.000	0.000	0.006	0.000
01:30:00	14.0	13.3	12.4	13.7	7.9	7.7	8.0	7.7	0.000	0.000	0.002	0.000
01:45:00	14.4	13.4	12.9	13.7	8.2	7.8	8.1	7.9	0.000	0.000	0.000	0.000
02:00:00	14.5	14.2	12.8	14.3	8.2	8.3	8.3	8.0	0.000	0.000	0.000	0.000
02:15:00	14.5	13.8	13.1	14.4	8.4	8.1	8.4	8.1	0.000	0.000	0.000	0.000
02:30:00	14.7	13.7	13.4	14.8	8.5	8.1	8.5	8.3	0.000	0.000	0.000	0.000
02:45:00	15.4	14.3	14.0	15.4	8.8	8.3	8.9	8.6	0.000	0.000	0.000	0.000
03:00:00	15.4	13.9	14.5	16.0	8.9	8.1	9.2	8.7	0.000	0.000	0.000	0.000
03:15:00	16.0	14.6	14.3	16.2	9.0	8.5	9.2	8.8	0.000	0.000	0.000	0.000
03:30:00	16.1	14.4	14.1	15.9	9.1	8.5	9.1	8.8	0.000	0.000	0.000	0.000
03:45:00	15.8	14.7	14.8	15.7	9.1	8.6	9.1	9.0	0.000	0.000	0.000	0.000
04:00:00	15.7	14.1	14.4	15.4	9.1	8.5	9.2	9.0	0.000	0.000	0.000	0.000
04:15:00	15.8	14.7	14.6	15.8	9.2	8.6	9.3	9.1	0.000	0.000	0.000	0.000
04:30:00	15.1	14.3	15.6	14.9	9.0	8.6	9.2	9.1	0.000	0.000	0.000	0.000
04:45:00	14.6	13.6	15.0	14.7	8.8	8.2	9.0	9.0	0.000	0.000	0.000	0.000
05:00:00	15.2	13.2	15.3	13.8	9.0	8.1	8.7	9.0	0.000	0.000	0.000	0.000
05:15:00	14.5	12.1	14.4	14.3	8.7	7.8	8.7	8.8	0.000	0.000	0.000	0.000
05:30:00	14.6	12.1	15.2	13.8	8.7	7.7	8.6	8.9	0.000	0.000	0.000	0.000
05:45:00	14.0	11.5	14.8	13.8	8.5	7.3	8.7	8.7	0.000	0.000	0.000	0.000
06:00:00	15.5	11.5	15.4	14.7	8.8	7.3	8.9	8.8	0.000	0.000	0.000	0.000
06:15:00	16.8	11.5	16.0	14.4	9.3	7.2	8.9	9.1	0.000	0.000	0.000	0.000
06:30:00	16.7	11.6	15.7	17.9	9.5	7.3	9.7	9.4	0.000	0.000	0.000	0.000
06:45:00	18.5	13.5	17.4	15.5	10.1	8.2	9.4	10.1	0.000	0.000	0.000	0.000
07:00:00	18.2	13.7	17.5	16.2	10.3	8.3	10.0	10.4	0.000	0.000	0.000	0.000
07:15:00	18.2	15.1	17.6	16.3	10.4	9.0	9.9	10.3	0.000	0.000	0.000	0.000
07:30:00	19.8	16.6	17.9	18.0	10.9	9.8	10.4	10.6	0.000	0.000	0.000	0.000
07:45:00	20.3	16.2	18.5	18.6	11.0	9.7	10.8	11.0	0.000	0.000	0.000	0.000
08:00:00	20.8	17.7	18.8	19.8	11.2	10.3	11.1	11.1	0.000	0.000	0.000	0.000
08:15:00	21.7	19.0	19.1	18.9	11.4	10.6	11.0	11.1	0.000	0.000	0.000	0.000
08:30:00	21.1	18.9	18.8	18.5	11.1	10.8	10.6	10.9	0.000	0.000	0.000	0.000
08:45:00	20.0	18.5	17.9	18.5	11.1	10.7	10.8	10.6	0.000	0.000	0.000	0.000
09:00:00	63.8	19.0	17.3	18.6	16.3	11.0	11.4	11.2	0.000	0.000	0.000	0.000
09:15:00	20.3	18.6	29.3	23.0	12.4	11.1	14.5	16.3	0.000	0.000	0.000	0.000
09:30:00	24.9	19.3	25.2	23.7	16.1	12.1	15.2	16.5	0.000	0.000	0.000	0.000
09:45:00	22.2	20.0	33.8	23.1	14.0	12.9	14.9	17.0	0.000	0.000	0.000	0.000
10:00:00	20.3	21.3	23.0	21.1	12.7	13.2	13.4	14.1	0.000	0.000	0.000	0.000
10:15:00	19.8	19.5	18.7	18.8	12.3	12.0	12.0	11.8	0.000	0.000	0.000	0.000
10:30:00	19.9	18.0	18.3	20.4	12.1	11.2	12.1	11.7	0.000	0.000	0.000	0.000
10:45:00	20.1	17.0	19.0	20.1	12.2	11.0	12.3	12.1	0.000	0.000	0.000	0.000
11:00:00	24.4	22.1	21.5	22.8	15.1	14.4	14.3	13.8	0.000	0.000	0.000	0.000
11:15:00	41.5	44.2	34.0	41.0	29.1	31.3	29.2	23.3	0.000	0.000	0.000	0.001
11:30:00	49.9	44.5	50.1	52.4	38.0	32.9	39.7	37.3	0.005	0.001	0.000	0.013
11:45:00	59.1	63.3	53.2	64.1	45.9	49.3	50.6	41.1	0.010	0.000	0.000	0.012



# DAILY AIR MONITORING REPORT

## Florence C&D Landfill – Air Monitoring

Date : 2026-05-08

**Table 3 : 15 Minute Average Concentrations (PM)**

	Avg. 2943 - PM10 (µg/m³)	Avg. 3061 - PM10 (µg/m³)	Avg. 2997 - PM10 (µg/m³)	Avg. 2996 - PM10 (µg/m³)	Avg. 2943 - PM2.5 (µg/m³)	Avg. 3061 - PM2.5 (µg/m³)	Avg. 2996 - PM2.5 (µg/m³)	Avg. 2997 - PM2.5 (µg/m³)	Avg. 2943 - H2S (PPM)	Avg. 3061 - H2S (PPM)	Avg. 2996 - H2S (PPM)	Avg. 2997 - H2S (PPM)
12:00:00	53.0	55.4	53.1	52.9	41.6	43.1	41.2	41.2	0.010	0.000	0.000	0.013
12:15:00	65.1	63.1	56.1	63.4	51.6	49.7	50.4	44.2	0.005	0.000	0.000	0.015
12:30:00	69.1	65.9	61.4	65.3	55.2	51.8	52.3	48.6	0.002	0.000	0.000	0.015
12:45:00	64.7	66.9	59.7	60.4	51.1	53.2	48.2	47.5	0.000	0.000	0.000	0.012
13:00:00	59.1	65.8	55.5	57.8	46.7	52.0	46.5	43.9	0.000	0.000	0.000	0.009
13:15:00	65.0	57.2	51.0	53.7	44.1	45.0	42.9	39.5	0.000	0.000	0.000	0.005
13:30:00	44.3	49.8	42.2	43.3	35.0	39.2	34.2	32.0	0.000	0.000	0.000	0.000
13:45:00	42.4	43.8	37.1	40.9	33.0	34.0	32.1	27.7	0.000	0.000	0.000	0.000
14:00:00	41.8	43.0	38.1	42.0	33.0	33.5	33.1	29.4	0.000	0.000	0.000	0.000
14:15:00	39.9	40.3	36.1	39.7	31.5	31.8	31.6	28.3	0.000	0.000	0.000	0.000
14:30:00	41.4	40.9	34.6	39.7	30.7	31.7	31.2	26.9	0.000	0.000	0.000	0.000
14:45:00	41.4	40.6	36.6	38.6	29.6	31.6	30.6	27.8	0.000	0.000	0.000	0.000
15:00:00	45.1	40.5	36.0	39.0	29.7	31.8	30.7	27.7	0.000	0.000	0.000	0.000
15:15:00	38.7	36.5	34.6	36.5	28.4	28.0	28.5	26.8	0.000	0.000	0.000	0.000
15:30:00	30.7	30.9	31.7	34.1	23.1	23.5	26.3	24.4	0.000	0.000	0.000	0.000
15:45:00	24.5	27.7	23.3	24.4	17.3	20.1	17.9	16.4	0.000	0.000	0.000	0.000
16:00:00	35.1	25.3	24.5	28.7	16.7	15.9	17.7	15.9	0.000	0.000	0.000	0.000
16:15:00	35.5	30.9	31.0	33.6	21.2	19.4	21.4	20.1	0.000	0.000	0.000	0.000
16:30:00	26.9	26.2	24.0	27.3	17.7	17.8	18.8	16.7	0.000	0.000	0.000	0.000
16:45:00	29.7	27.0	23.9	26.4	18.9	17.8	18.2	16.6	0.004	0.001	0.001	0.000
17:00:00	25.3	26.0	22.6	24.4	17.6	17.9	17.6	16.5	0.000	0.000	0.000	0.000
17:15:00	23.3	26.0	21.6	22.7	16.3	17.6	16.6	15.7	0.000	0.000	0.000	0.000
17:30:00	19.3	20.0	17.9	18.3	13.5	14.1	13.2	12.9	0.000	0.000	0.000	0.000
17:45:00	15.5	15.9	14.8	15.0	11.0	11.2	10.9	10.6	0.000	0.000	0.000	0.000
18:00:00	15.7	15.5	16.5	16.0	11.0	10.9	11.3	11.2	0.000	0.000	0.000	0.000
18:15:00	17.2	15.3	18.2	18.4	11.1	10.5	11.6	11.4	0.000	0.000	0.000	0.000
18:30:00	17.5	15.9	20.0	19.5	11.0	10.6	11.7	11.5	0.000	0.000	0.000	0.000
18:45:00	18.3	17.4	20.2	18.3	11.1	11.1	11.4	11.3	0.000	0.000	0.000	0.000
19:00:00	18.4	17.6	22.7	18.1	11.2	11.0	11.5	11.5	0.000	0.000	0.000	0.000
19:15:00	18.5	17.5	21.5	18.7	11.0	10.4	11.2	11.3	0.000	0.000	0.000	0.000
19:30:00	17.4	16.3	21.3	18.2	9.8	9.7	10.3	10.6	0.000	0.000	0.000	0.000
19:45:00	17.6	17.0	21.2	17.3	9.7	10.4	10.0	9.9	0.000	0.000	0.000	0.000
20:00:00	18.3	18.4	19.4	18.1	11.2	12.4	10.6	10.3	0.000	0.000	0.000	0.000
20:15:00	19.9	18.3	22.8	17.5	12.1	12.4	10.9	10.9	0.000	0.000	0.000	0.000
20:30:00	18.4	17.5	23.5	18.5	11.5	11.7	11.6	11.4	0.000	0.000	0.000	0.000
20:45:00	18.2	19.9	26.8	17.3	11.0	11.7	11.4	11.9	0.000	0.000	0.000	0.000
21:00:00	17.3	17.6	24.4	17.9	10.4	11.2	11.4	12.2	0.000	0.000	0.000	0.000
21:15:00	18.5	18.1	25.3	19.0	10.4	11.0	11.2	11.8	0.000	0.000	0.000	0.000
21:30:00	18.7	17.2	26.3	18.3	10.1	9.8	10.2	11.3	0.000	0.000	0.000	0.000
21:45:00	18.9	16.6	22.2	17.0	9.3	9.3	8.4	8.8	0.000	0.000	0.000	0.000
22:00:00	19.9	17.6	22.9	16.7	9.1	9.3	8.0	8.3	0.000	0.000	0.000	0.000
22:15:00	19.0	17.7	29.3	17.3	8.4	8.6	8.3	8.6	0.000	0.000	0.000	0.000
22:30:00	20.2	17.9	25.7	19.1	9.0	8.8	10.0	9.3	0.000	0.000	0.000	0.000
22:45:00	21.6	18.0	26.4	20.3	11.1	9.0	11.7	9.9	0.000	0.000	0.000	0.000
23:00:00	22.6	21.0	28.8	21.3	11.0	10.6	11.3	11.2	0.000	0.000	0.000	0.000
23:15:00	28.1	21.4	24.0	21.2	11.5	10.8	11.3	11.7	0.000	0.000	0.000	0.000
23:30:00	22.4	20.8	19.9	18.4	9.3	9.8	8.7	8.4	0.000	0.000	0.000	0.000
23:45:00	19.6	17.3	23.8	16.6	7.3	7.6	7.1	7.5	0.000	0.000	0.000	0.000



# DAILY AIR MONITORING REPORT

Florence C&D Landfill – Air Monitoring

Date : 2026-05-08

Table 4 : Summary of Exceedances (greater than Action Level) -

Minute of 15-min intv	Avg. 2943 - PM10 (µg/m³)	Avg. 3061 - PM10 (µg/m³)	Avg. 2996 - PM10 (µg/m³)	Avg. 2997 - PM10 (µg/m³)	Avg. 2943 - PM2.5 (µg/m³)	Avg. 3061 - PM2.5 (µg/m³)	Avg. 2996 - PM2.5 (µg/m³)	Avg. 2997 - PM2.5 (µg/m³)	Avg. 2943 - H2S (PPM)	Avg. 3061 - H2S (PPM)	Avg. 2996 - H2S (PPM)	Avg. 2997 - H2S (PPM)
11:30:00					38.0		39.7	37.3				
11:45:00					45.9	49.3	50.6	41.1				
12:00:00					41.6	43.1	41.2	41.2				
12:15:00					51.6	49.7	50.4	44.2				
12:30:00					55.2	51.8	52.3	48.6				
12:45:00					51.1	53.2	48.2	47.5				
13:00:00					46.7	52.0	46.5	43.9				
13:15:00					44.1	45.0	42.9	39.5				
13:30:00						39.2						